



73 Chamberlayne Road, Eastleigh, SO50 5JJ

Offers over £250,000



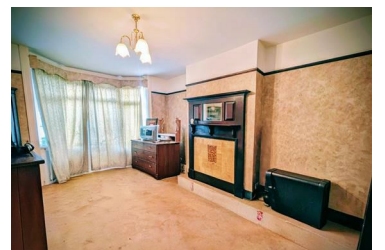
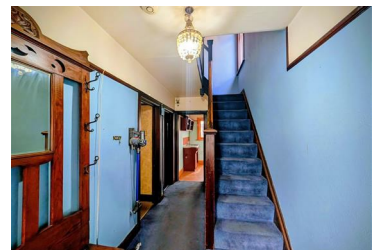
**** OPEN DAY SUNDAY 22ND FEBRUARY ONLY ****

Offered with a NO FORWARD CHAIN I am delighted to present this spacious three bedroom semi detached family home within walking distance to Eastleigh town centre!!

Internally the property comprises of entrance hallway, lounge at the front with bay windows, dining room, kitchen and conservatory at the rear overlooking the garden

Upon the first floor you will find two large double bedrooms a further single and family bathroom

- FANTASTIC RENOVATION OPPORTUNITY- OPEN DAY SUNDAY 22ND OF FEBRUARY 2026
- LOUNGE
- KITCHEN
- FAMILY BATHROOM
- DRIVEWAY PARKING FOR TWO CARS
- THREE BEDROOM SEMI DETACHED FAMILY HOME IN CHAMBERLAYNE ROAD EASTLEIGH
- DINING ROOM
- CONSERVATORY
- LARGE REAR GARDEN
- NO FORWARD CHAIN



Riverbank House 65a Bishopstoke Road, Eastleigh, Hampshire, SO50 6BF

Tel: 07841976860 Email: luci@lucimorganestateagency.com <https://www.lucimorganestateagency.com>